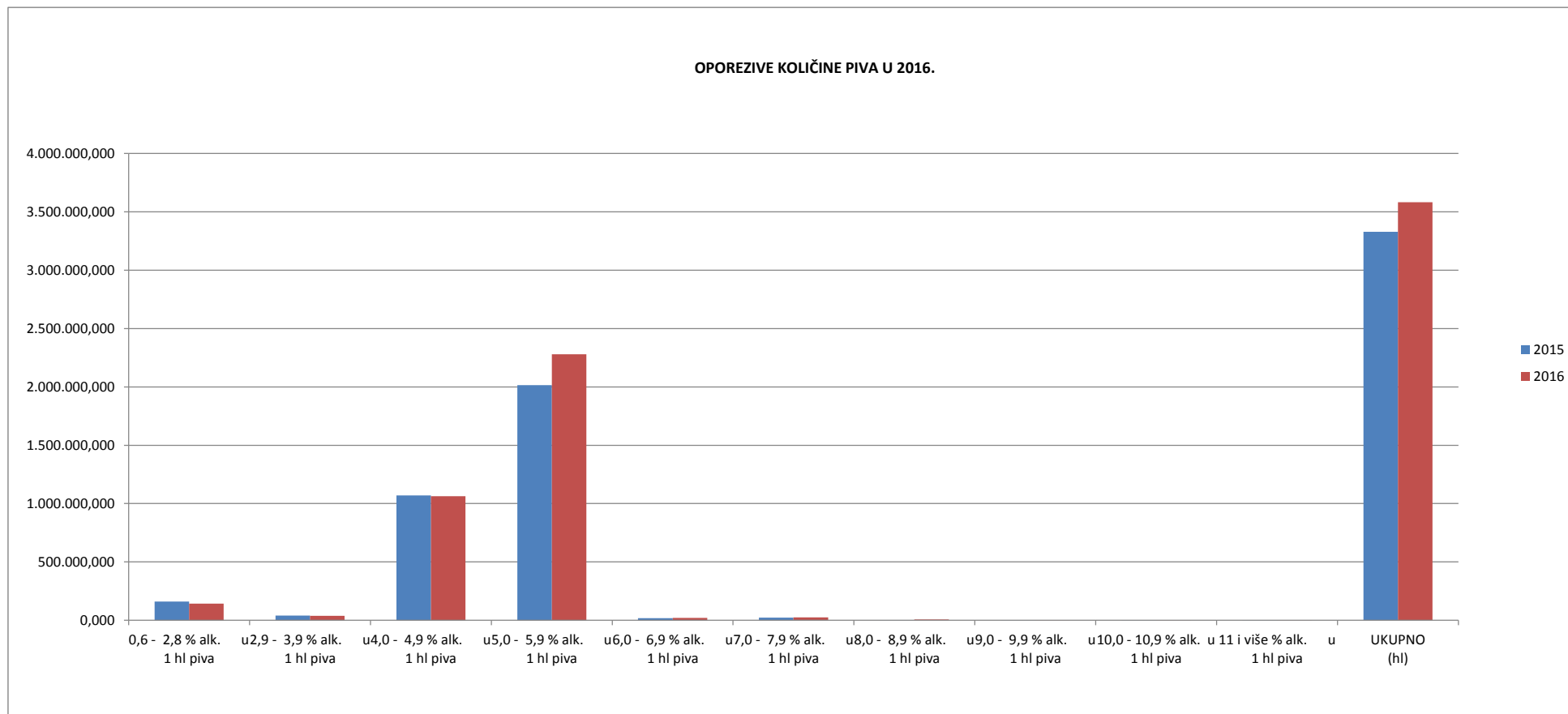


**PIVO - KOLIČINSKI PRIKAZ 2016.**

1. Oporezive količine i puštene u potrošnju
2. Količine uvezene i smještene u trošarinsko skladište
3. Količine uvezene i puštene u slobodan promet
4. Ukupno uvezene količine
5. Količine primljene iz druge države članice
6. Ukupno oporezive količine
7. Količine otpremljene u drugu državu članicu EU
8. Izvezene količine
9. Ukupno neoporezive količine

**PIVO**  
**OPOREZIVE KOLIČINE I PUŠTENE U POTROŠNJU**

Količina	0,6 - 2,8 % alk. u 1 hl piva	2,9 - 3,9 % alk. u 1 hl piva	4,0 - 4,9 % alk. u 1 hl piva	5,0 - 5,9 % alk. u 1 hl piva	6,0 - 6,9 % alk. u 1 hl piva	7,0 - 7,9 % alk. u 1 hl piva	8,0 - 8,9 % alk. u 1 hl piva	9,0 - 9,9 % alk. u 1 hl piva	10,0 - 10,9 % alk. u 1 hl piva	11 i više % alk. u 1 hl piva	UKUPNO (hl)
2015	160.321,210	41.087,580	1.068.903,650	2.014.831,280	18.729,960	23.104,990	481,560	82,100	111,110	43,710	3.327.696,720
2016	142.336,590	39.548,940	1.063.710,940	2.279.059,510	21.374,440	25.021,960	8.104,070	920,890	975,300	63,430	3.581.115,600
2016/2015	-11,22%	-3,74%	-0,49%	13,11%	14,12%	8,30%	1582,88%	1021,67%	777,78%	45,12%	7,62%

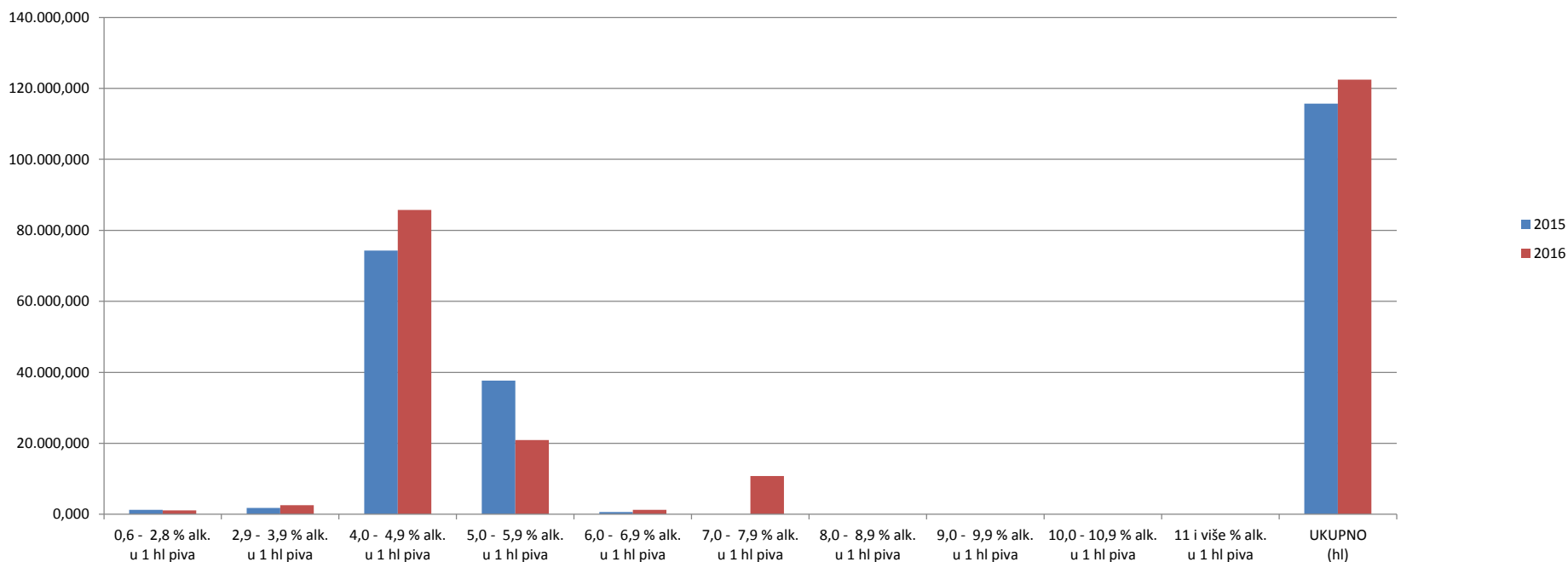


**PIVO**

**KOLIČINE UVEZENE I SMJEŠTENE U TROŠARINSKO SKLADIŠTE**

Količina	0,6 - 2,8 % alk. u 1 hl piva	2,9 - 3,9 % alk. u 1 hl piva	4,0 - 4,9 % alk. u 1 hl piva	5,0 - 5,9 % alk. u 1 hl piva	6,0 - 6,9 % alk. u 1 hl piva	7,0 - 7,9 % alk. u 1 hl piva	8,0 - 8,9 % alk. u 1 hl piva	9,0 - 9,9 % alk. u 1 hl piva	10,0 - 10,9 % alk. u 1 hl piva	11 i više % alk. u 1 hl piva	UKUPNO (hl)
2015	1.270,680	1.794,840	74.332,620	37.627,660	673,600	0,000	0,000	0,000	0,000	0,000	115.699,400
2016	1.097,040	2.584,200	85.776,950	20.913,350	1.278,180	10.806,460	0,000	0,000	0,000	0,000	122.456,180
2016/2015	-13,67%	43,98%	15,40%	-44,42%	89,75%	100,00%	0,00%	0,00%	0,00%	0,00%	5,84%

KOLIČINE PIVA UVEZENE I SMJEŠTENE U TROŠARINSKO SKLADIŠTE U 2016.

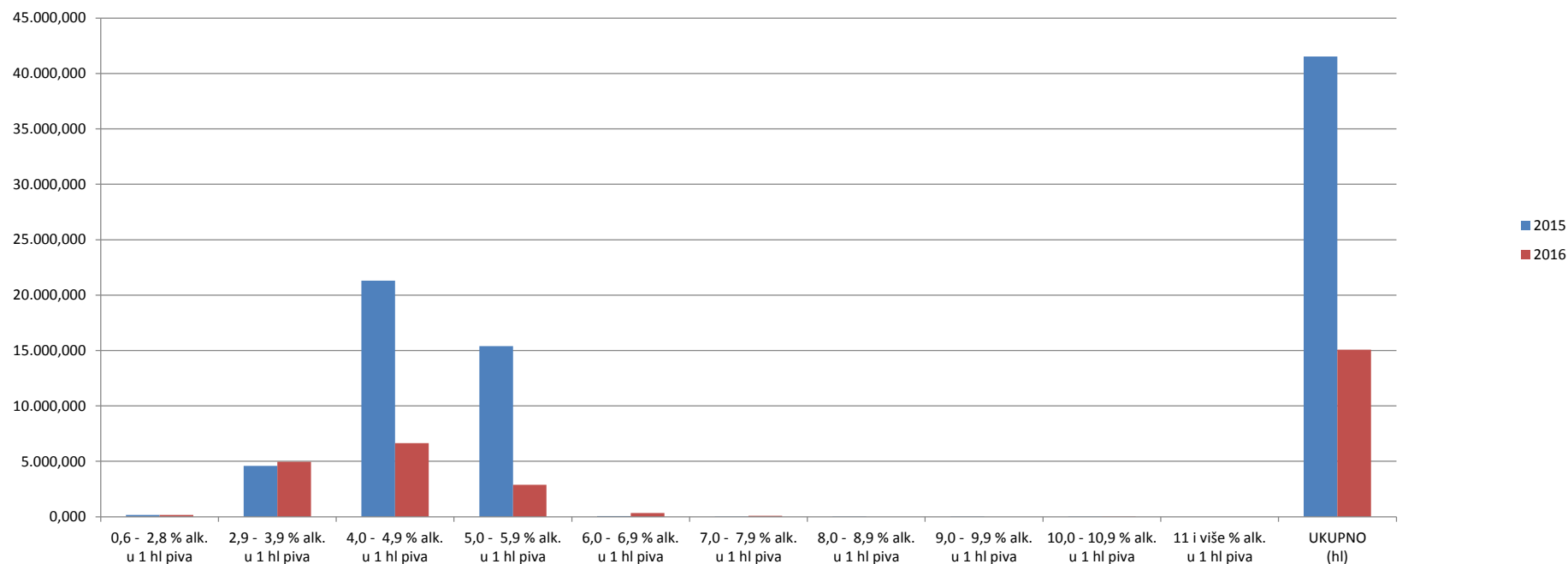


**PIVO**

**KOLIČINE UVEZENE I PUŠTENE U SLOBODAN PROMET**

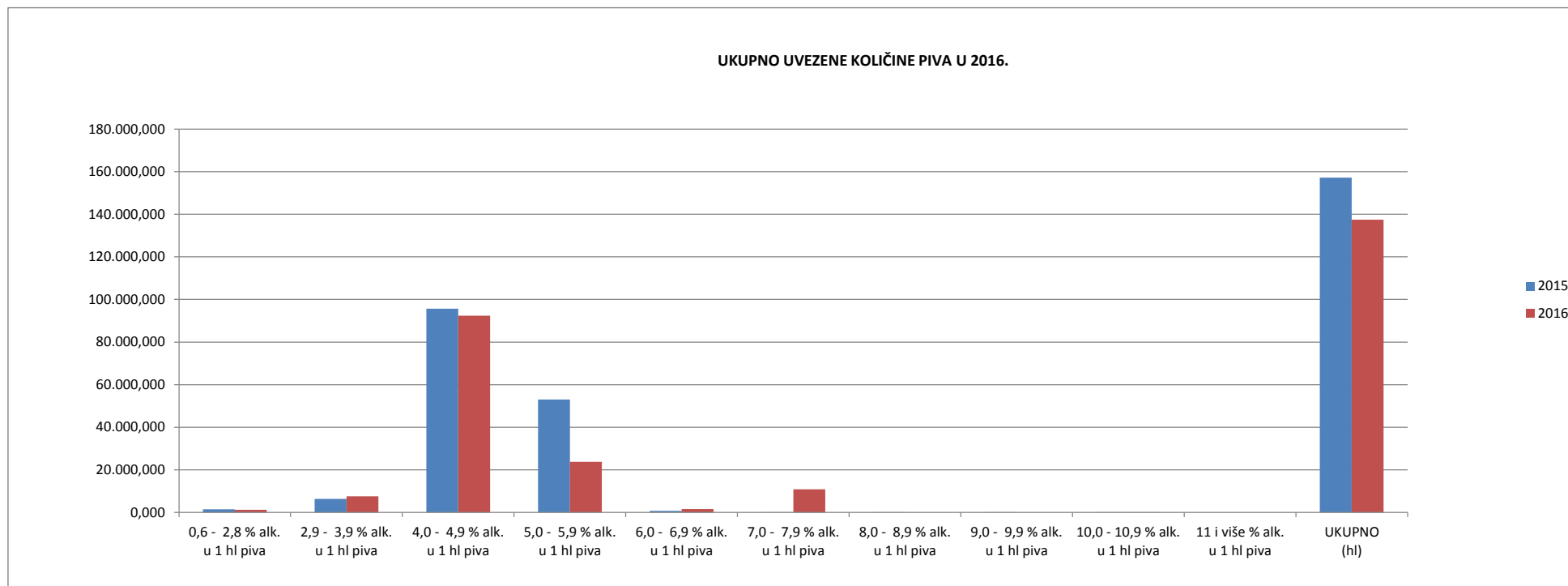
Količina	0,6 - 2,8 % alk. u 1 hl piva	2,9 - 3,9 % alk. u 1 hl piva	4,0 - 4,9 % alk. u 1 hl piva	5,0 - 5,9 % alk. u 1 hl piva	6,0 - 6,9 % alk. u 1 hl piva	7,0 - 7,9 % alk. u 1 hl piva	8,0 - 8,9 % alk. u 1 hl piva	9,0 - 9,9 % alk. u 1 hl piva	10,0 - 10,9 % alk. u 1 hl piva	11 i više % alk. u 1 hl piva	UKUPNO (hl)
2015	158,160	4.582,640	21.307,190	15.388,270	72,210	15,950	1,070	6,390	0,090	0,000	41.531,910
2016	161,460	4.953,470	6.646,830	2.884,280	333,330	83,430	0,000	0,000	1,950	0,000	15.064,720
2016/2015	2,09%	8,09%	-68,80%	-81,26%	361,61%	423,07%	-100,00%	-100,00%	2066,67%	0,00%	-63,73%

**KOLIČINE PIVA UVEZENE I PUŠTENE U SLOBODAN PROMET U 2016.**



**PIVO**  
**UKUPNO UVEZENE KOLIČINE**

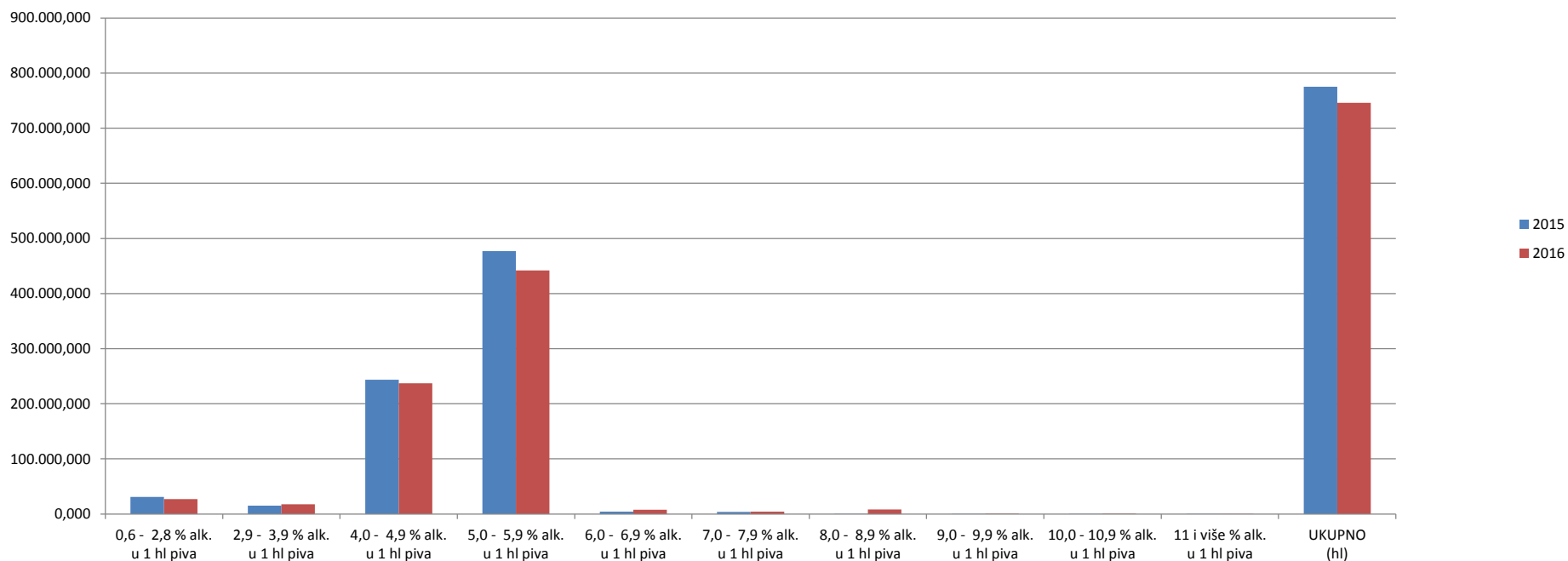
Količina	0,6 - 2,8 % alk. u 1 hl piva	2,9 - 3,9 % alk. u 1 hl piva	4,0 - 4,9 % alk. u 1 hl piva	5,0 - 5,9 % alk. u 1 hl piva	6,0 - 6,9 % alk. u 1 hl piva	7,0 - 7,9 % alk. u 1 hl piva	8,0 - 8,9 % alk. u 1 hl piva	9,0 - 9,9 % alk. u 1 hl piva	10,0 - 10,9 % alk. u 1 hl piva	11 i više % alk. u 1 hl piva	UKUPNO (hl)
2015	1.428,840	6.377,480	95.639,820	53.015,930	745,810	15,950	1,070	6,390	0,090	0,000	157.231,320
2016	1.258,500	7.537,670	92.423,780	23.797,620	1.611,510	10.889,890	0,000	0,000	1,950	0,000	137.520,880
2016/2015	-11,92%	18,19%	-3,36%	-55,11%	116,08%	68175,17%	-100,00%	-100,00%	2066,67%	0,00%	-12,54%



**PIVO**  
**PRIMLJENO IZ DRUGE DRŽAVE ČLANICE EU**

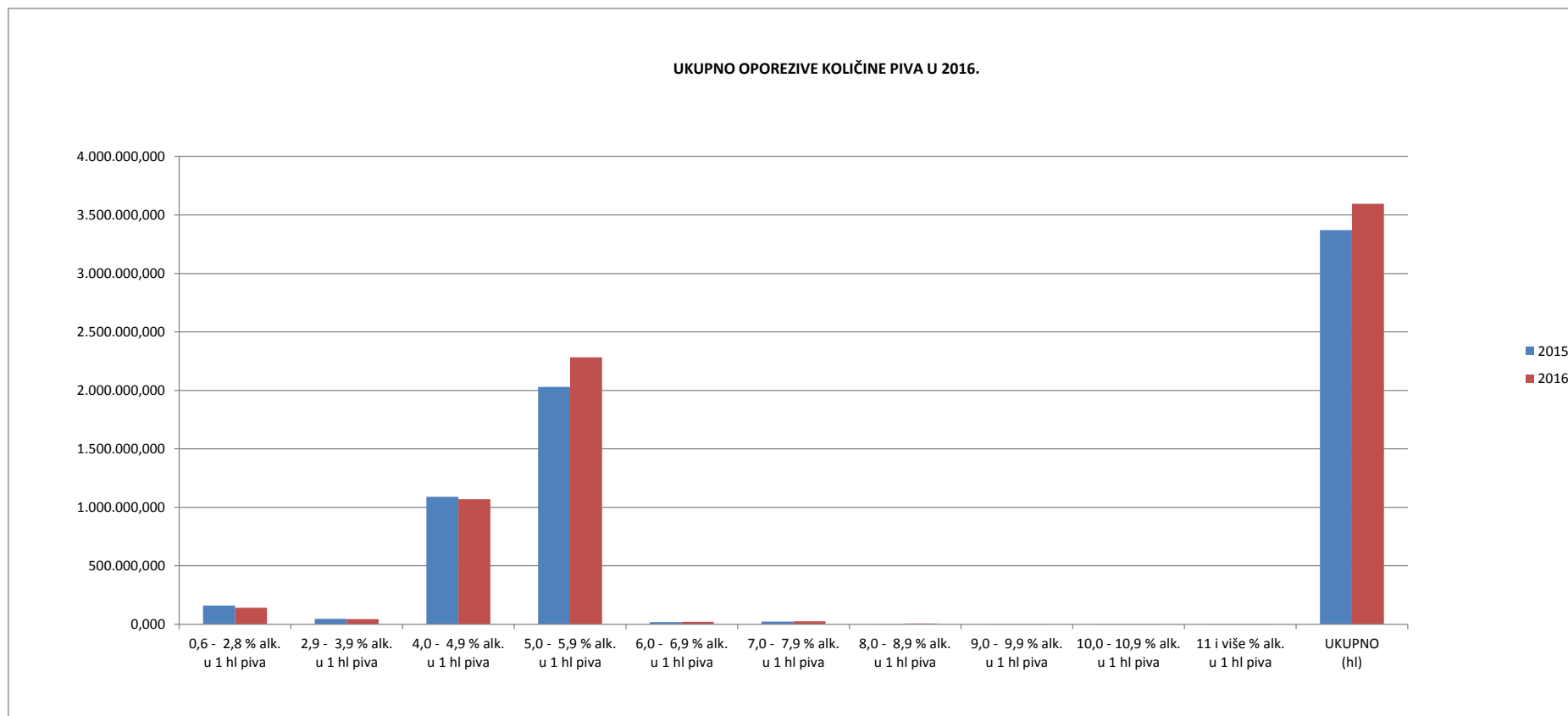
Količina	0,6 - 2,8 % alk. u 1 hl piva	2,9 - 3,9 % alk. u 1 hl piva	4,0 - 4,9 % alk. u 1 hl piva	5,0 - 5,9 % alk. u 1 hl piva	6,0 - 6,9 % alk. u 1 hl piva	7,0 - 7,9 % alk. u 1 hl piva	8,0 - 8,9 % alk. u 1 hl piva	9,0 - 9,9 % alk. u 1 hl piva	10,0 - 10,9 % alk. u 1 hl piva	11 i više % alk. u 1 hl piva	UKUPNO (hl)
2015	30.942,530	15.337,640	243.421,980	476.852,350	4.550,640	3.575,470	503,240	81,350	111,200	43,710	775.419,710
2016	26.865,700	17.731,870	237.123,020	442.068,700	7.838,480	4.372,620	8.074,500	902,540	966,500	63,430	746.006,960
2016/2015	-13,18%	15,61%	-2,59%	-7,29%	72,25%	22,29%	1504,50%	1009,45%	769,15%	45,12%	-3,79%

KOLIČINE PIVA PRIMLJENE IZ DRUGE DRŽAVE ČLANICE EU U 2016.



**PIVO**  
**UKUPNO OPOREZIVE KOLIČINE**

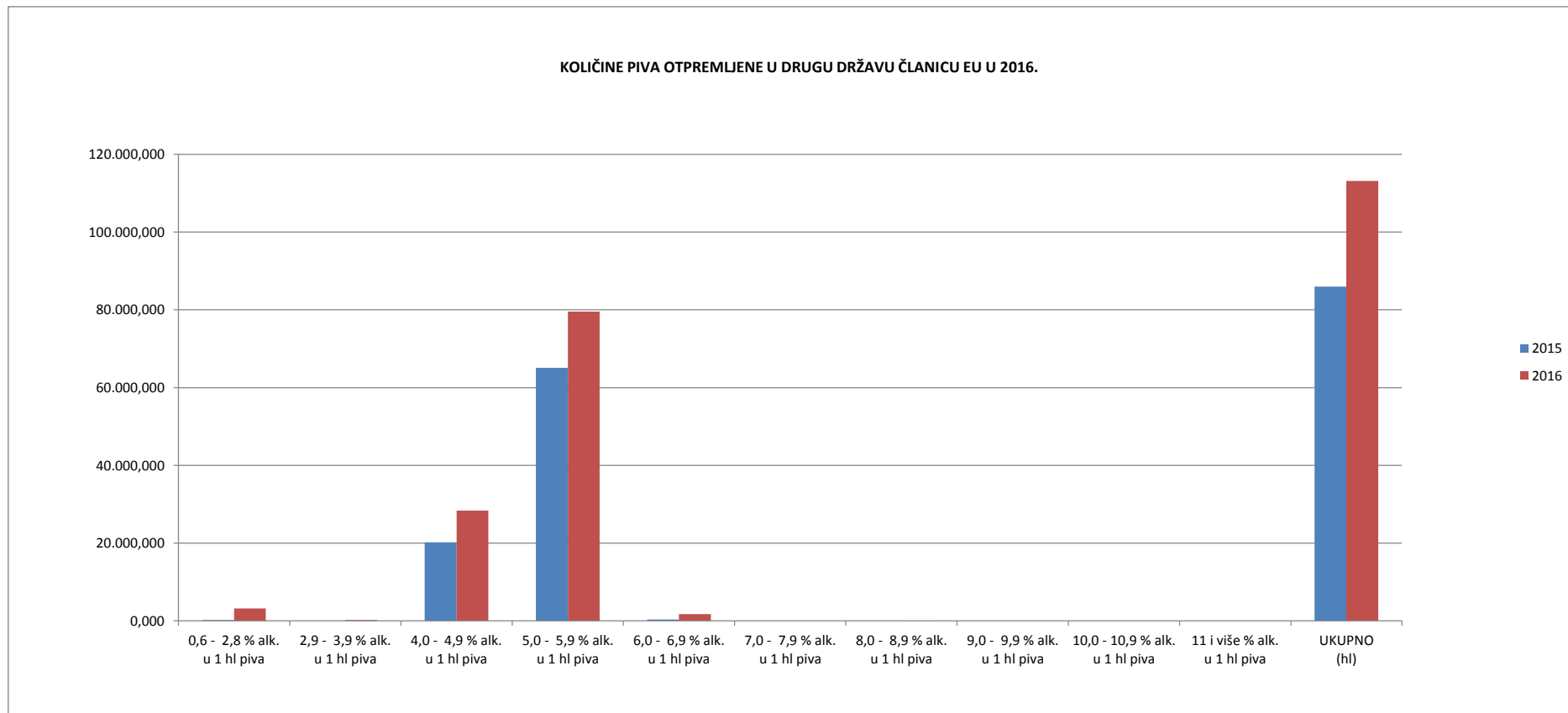
Količina	0,6 - 2,8 % alk. u 1 hl piva	2,9 - 3,9 % alk. u 1 hl piva	4,0 - 4,9 % alk. u 1 hl piva	5,0 - 5,9 % alk. u 1 hl piva	6,0 - 6,9 % alk. u 1 hl piva	7,0 - 7,9 % alk. u 1 hl piva	8,0 - 8,9 % alk. u 1 hl piva	9,0 - 9,9 % alk. u 1 hl piva	10,0 - 10,9 % alk. u 1 hl piva	11 i više % alk. u 1 hl piva	UKUPNO (hl)
2015	160.479,370	45.670,220	1.090.210,830	2.030.219,560	18.802,170	23.120,940	482,630	88,490	111,200	43,710	3.369.228,630
2016	142.498,050	44.502,410	1.070.357,770	2.281.943,770	21.707,770	25.105,390	8.104,070	920,890	977,250	63,430	3.596.180,320
2016/2015	-11,20%	-2,56%	-1,82%	12,40%	15,45%	8,58%	1579,15%	940,67%	778,82%	45,12%	6,74%



**PIVO**  
**KOLIČINE OTPREMLJENE U DRUGU DRŽAVU ČLANICU**

Količina	0,6 - 2,8 % alk. u 1 hl piva	2,9 - 3,9 % alk. u 1 hl piva	4,0 - 4,9 % alk. u 1 hl piva	5,0 - 5,9 % alk. u 1 hl piva	6,0 - 6,9 % alk. u 1 hl piva	7,0 - 7,9 % alk. u 1 hl piva	8,0 - 8,9 % alk. u 1 hl piva	9,0 - 9,9 % alk. u 1 hl piva	10,0 - 10,9 % alk. u 1 hl piva	11 i više % alk. u 1 hl piva	UKUPNO (hl)
2015	217,780	0,000	20.244,470	65.128,200	357,100	0,000	0,000	0,000	0,000	0,000	85.947,580
2016	3.219,360	240,000	28.361,680	79.565,790	1.746,260	0,000	0,200	0,000	0,000	0,000	113.133,250
2016/2015	1378,26%	100,00%	40,10%	22,17%	389,01%	0,00%	100,00%	0,00%	0,00%	0,00%	31,63%

**KOLIČINE PIVA OTPREMLJENE U DRUGU DRŽAVU ČLANICU EU U 2016.**

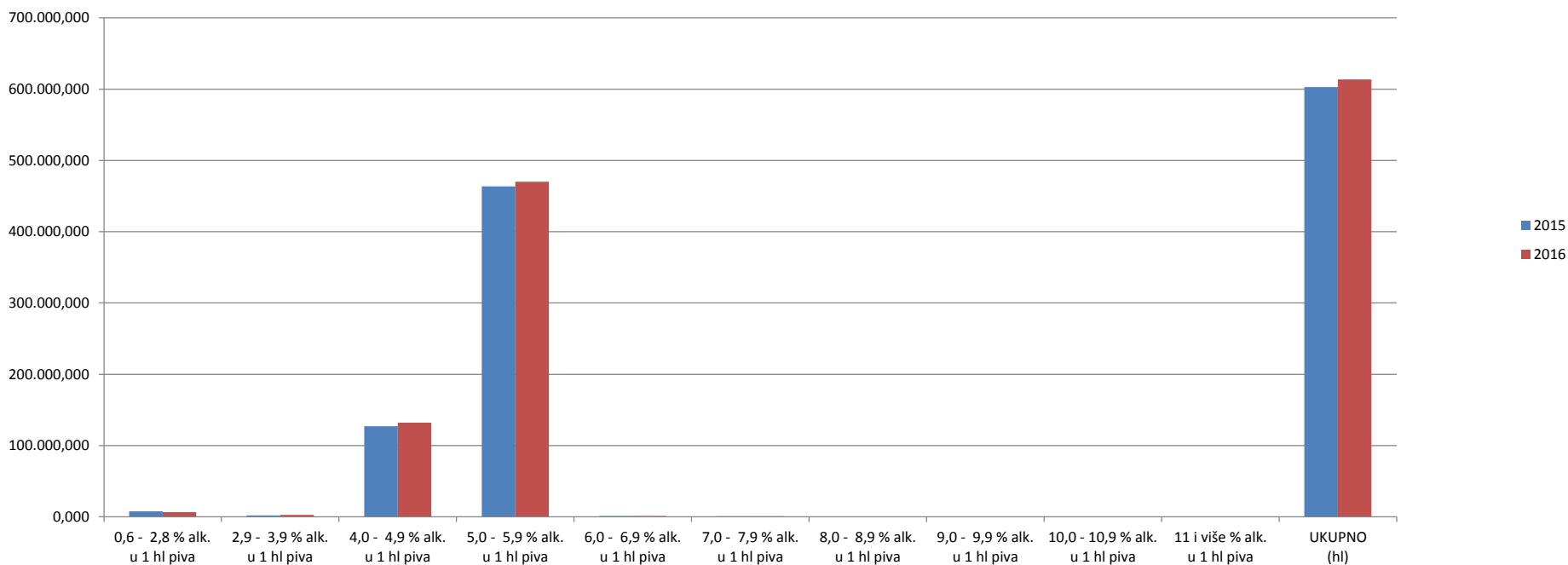




**PIVO**  
**IZVEZENE KOLIČINE**

Količina	0,6 - 2,8 % alk. u 1 hl piva	2,9 - 3,9 % alk. u 1 hl piva	4,0 - 4,9 % alk. u 1 hl piva	5,0 - 5,9 % alk. u 1 hl piva	6,0 - 6,9 % alk. u 1 hl piva	7,0 - 7,9 % alk. u 1 hl piva	8,0 - 8,9 % alk. u 1 hl piva	9,0 - 9,9 % alk. u 1 hl piva	10,0 - 10,9 % alk. u 1 hl piva	11 i više % alk. u 1 hl piva	UKUPNO (hl)
2015	7.897,830	1.858,000	127.205,160	463.739,900	1.365,740	730,000	0,000	0,000	0,000	0,000	602.796,620
2016	6.723,800	2.636,000	132.068,560	470.136,080	1.254,210	698,200	0,000	0,000	0,000	0,000	613.516,820
2016/2015	-14,87%	41,87%	3,82%	1,38%	-8,17%	-4,36%	0,00%	0,00%	0,00%	0,00%	1,78%

IZVEZENE KOLIČINE PIVA U 2016.



**PIVO**  
**UKUPNO NEOPOREZIVE KOLIČINE**

Količina	0,6 - 2,8 % alk. u 1 hl piva	2,9 - 3,9 % alk. u 1 hl piva	4,0 - 4,9 % alk. u 1 hl piva	5,0 - 5,9 % alk. u 1 hl piva	6,0 - 6,9 % alk. u 1 hl piva	7,0 - 7,9 % alk. u 1 hl piva	8,0 - 8,9 % alk. u 1 hl piva	9,0 - 9,9 % alk. u 1 hl piva	10,0 - 10,9 % alk. u 1 hl piva	11 i više % alk. u 1 hl piva	UKUPNO (hl)
2015	13.604,060	1.906,130	223.541,650	540.859,200	2.507,750	3.245,240	0,000	2,040	0,000	0,000	785.666,130
2016	13.231,200	2.911,700	207.236,890	602.152,960	4.529,260	11.888,330	0,540	2,180	1,200	0,000	841.954,230
2016/2015	-2,74%	52,75%	-7,29%	11,33%	80,61%	266,33%	100,00%	6,86%	100,00%	0,00%	7,16%

UKUPNO NEOPOREZIVE KOLIČINE PIVA U 2016.

